

## EDUCATION FOR A SUCCESSFUL ECONOMY

Supply chain management impacts nearly every business and industry, and requires workers from entry level to senior management positions. The industry focuses on planning and forecasting, purchasing, product assembly, moving, storing, and keeping track of a product as it flows towards consumers. With the supply chain management field expected to add 1.4 million new jobs nationally by 2018, a critical shortage of educated and trained employees leaves industries with vacant positions, and reduces U.S. competitiveness and market share.

Employees with training and certifications in supply chain management will help meet the pressing levels of demand in the industry, directly and positively impacting competitiveness.

## INDUSTRY PARTNERSHIP

The Council of Supply Chain Management Professionals is passionate about developing the careers of all supply chain management professionals—those already working in the field, those who would like to be, and the next generation of supply chain leaders. That's why CSCMP is excited to partner with Columbus State Community College and the members of the consortium to create this vital career program. Increasing opportunities for supply chain management training is a win-win for everyone.

**“The SCPro™ Fundamentals training program at Columbus State is the most useful tool I have found to develop individuals within our Transportation Department. The training has solved my annual review dilemma of finding an appropriate development path for associates. The staff at Columbus State has been very helpful and responsive to our needs. This training is a win.”**

– Jim Dykstra, Logistics Manager, Boar's Head Brand

**“Companies throughout the nation are focusing on increasing access to middle-skilled jobs, like logistics. We at Honda Logistics are doing this by strengthening and expanding successful training programs and aligning them with the required needs and industry standards. Nationally, over 200 of our workers have been trained and certified through this program, and that includes nearly 170 associates right here in Ohio.”**

– Kim Miller, Training and Development Assistant Manager, Honda Logistics North America, Inc.

**“The SCPro™ Fundamentals training program has helped me expand my knowledge and understanding of SCM. I'm leveraging what I learned to not only be a more valuable member to my organization, but a better member to the SCM discipline.”**

– Brad Wright, Business Development Manager, FST Logistics

## THE SUPPLY CHAIN MANAGEMENT PROGRAM AT COLUMBUS STATE

Columbus State Community College has a highly successful 20-year history of teaching students the planning and management of all activities involved in supply chain management, including sourcing and procurement, conversion, and logistics management. The college provides a thorough education on the coordination and collaboration between business partners and customers. The greater Columbus metropolitan region is home to many distribution and logistics operations, including centers for Limited Brands, JCPenney, Amazon, Zulily, DHL, and American Showa, Inc., and many of these companies have provided input into the design of the Supply Chain Management degree program.

In addition to the SCPro Fundamentals training program, Columbus State offers two-year associate degrees in Supply Chain Management and Logistics Engineering Technology. The Supply Chain Management degree can be completed entirely online and is a popular option for working adults looking to enter management roles within the field of supply chain management. The new Logistics Engineering Technology degree combines courses from supply chain management, engineering technologies, and computer science to prepare the next generations of supply chain problem solvers. Graduates of the Logistics Engineering Technology degree will have the skills to harness advances in robotics, automation, and data analytics to create more efficient systems and processes.

### HOW YOU CAN BECOME INVOLVED

- Schedule a program presentation for your workforce
- Provide internship opportunities to current students
- Consider our participants for your employment opportunities
- Offer tuition reimbursement to your employees for program participation
- Share the SCPro™ Fundamentals Training program with your partner organizations
- Serve as an advisory committee member

For more information, contact the Manufacturing Extension Partnership (MEP) at Columbus State.

614-287-5000

mep@csc.edu

mep.csc.edu

COLUMBUS STATE  
COMMUNITY COLLEGE

# SCPro™ Fundamentals Certification

Supply Chain Education for a Successful Economy



COLUMBUS STATE  
COMMUNITY COLLEGE





## THE SCPro™ FUNDAMENTALS TRAINING PROGRAM

A national consortium of nine community colleges, three universities, and the Council of Supply Chain Management Professionals (CSCMP) have worked together to develop eight certification tracks and the SCPro™ Fundamentals Certification Exams. Columbus State is the only college in Ohio offering these new, in-demand certifications. With SCPro™ Fundamentals Certification, both incumbent workers and individuals seeking employment will gain the knowledge and skills needed to enter the workforce and advance in the supply chain industry. This program benefits employers, connecting them with educated, certified candidates with the talents and abilities to meet their needs.

## ABOUT THE PROGRAM

Columbus State offers eight online, self-paced courses that prepare students to pass SCPro™ Fundamentals Certification Exams in eight key areas.

The CSCMP certification exams are offered in-person on the Columbus State campus, which is the only in-person component of the program. Columbus State has the highest certification exam pass rate (86.3%) and the highest average exam score (81.2%) of all community colleges in the consortium. To date, the program has issued more than 400 certifications, and worked with partners including Honda Logistics North America, Boar's Head Brand, FST Logistics, Alvis, Abercrombie & Fitch and the Columbus Urban League.

Columbus State Community College offers the most affordable tuition in the region, so each one-credit certification course is a cost- and time-effective opportunity to educate and invest in your entry- to middle-level employees.

### ACCESSIBLE WORKFORCE EDUCATION MEANS:

- Online courses teach directly to the SCPro™ Fundamentals Certification
- Competency-based education offered at student's own pace
- Streamlined enrollment process for program participants
- Single-credit courses reduce out-of-pocket costs

## CERTIFICATION OVERVIEW

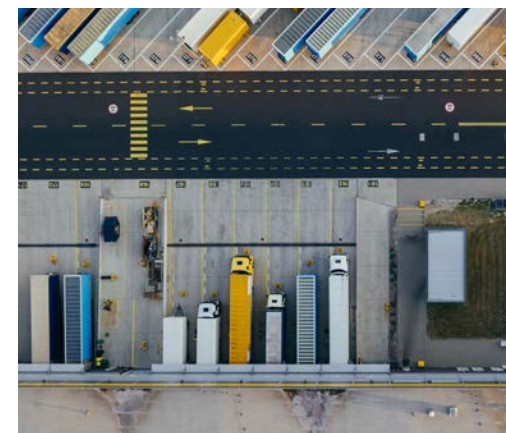
Each SCPro™ Fundamentals certification is offered as a stand-alone, one-credit module that can be applied toward Columbus State's existing three-credit courses within the Supply Chain Management associate degree. The program consists of eight total certifications, developed in conjunction with the Council of Supply Chain Management Professionals.

### Supply Chain Management Principles

This course defines the concept of the supply chain and all of its components, from raw materials extracted from the earth, to retail products ready for purchase by consumers. The principles learned in this track provide the necessary foundation for fully comprehending the following certification tracks.

### Warehousing Operations

This course is intended to train students on the basics of warehousing so that they may quickly acclimate themselves and be effective contributors in warehouse and distribution operations. Key elements of the track include: the role of warehousing in the supply chain, facility configuration, storage and handling techniques, performance metrics, customer service considerations, and safety concerns across various types of distribution facilities.



### Transportation Operations

This course explains in detail the different types of transportation modes (air, water, rail, surface, and pipeline) used throughout the supply chain, and the reasons for selecting certain modes. The track looks at cost drivers, such as dimension, weight, speed, etc., as well as delivery requirements and other special requirements, such as refrigerated or hazardous material transport.

### Customer Services Operations

This course discusses both internal and external customers, and how to deliver superior value to both. Upon completion of this track, participants will be capable of describing the management of customer relationships including the importance of communication, perceptions, understanding the product and service, and knowing quality as it pertains to customer service.

### Demand Planning

This course provides the essentials for sales and operations planning, integrating demand forecasts with capacity forecasts, and marketing and sales functions.

### Manufacturing and Service Operations

This course focuses on planning, organizing, controlling, directing, motivating and coordinating activities used to produce goods and services. It also explores analytical tools useful in measuring productivity.

### Inventory Management

This course teaches inventory management essentials, including different approaches and variables that affect decisions. Students will receive exposure to bar-coding systems, picking and delivery processes, and storage and sorting systems.

### Supply Management & Procurement

This course focuses on the importance of evaluation, selection, and maintenance of supplier functions, and the integration of internal functions with external supply chain partners.

*This document was funded in whole by a \$24.5M TAACCT grant awarded by the U.S. Department of Labor's Employment and Training Administration to the LINCS in Supply Chain Management consortium.*

*A nationwide supply chain education program funded by the U.S. Department of Labor.*

